

AMR Water Meter

KIGG AWM I

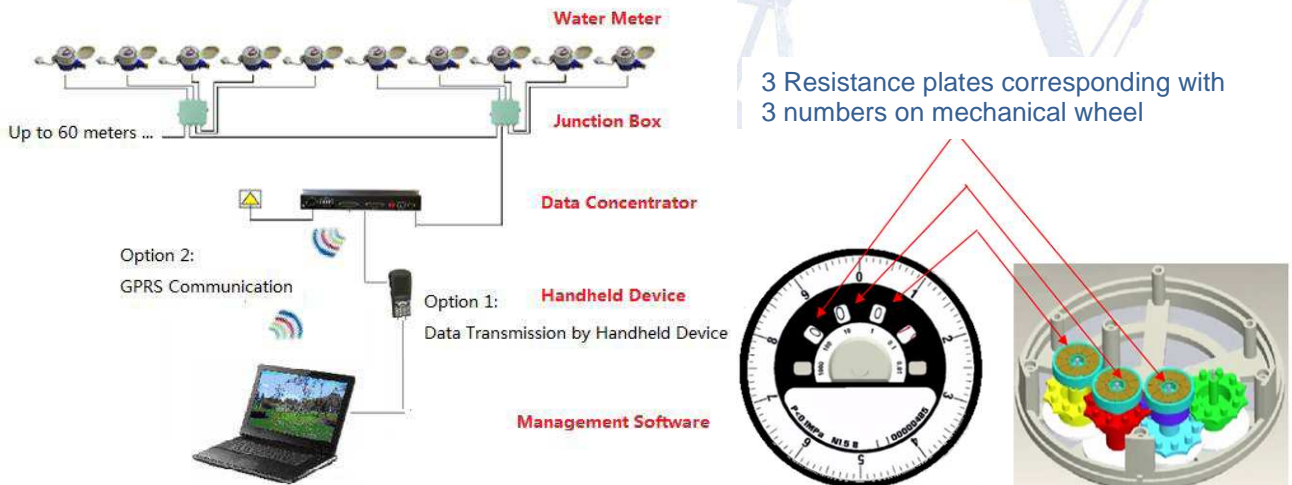


The KIGG AWM I is a direct-read water meter that combines power-free water-consumption measurement with powered data monitoring. The meter forms part of a system which includes a data collector and related software. Data collected by the KIGG AWM I can be distributed by this system to remote terminals, which can be used to manage account- and billing-related functions. The AWM I employ a unique resistor measurement system allowing each register digit to correspond to a resistance. The power to read the meter coming from a hand held terminal.

Technical:

Subject	Parameter	15mm(1/2")	20mm(3/4")
Model	Brass body, Cold water	AWM I-015C	AWM I-020C
	Brass body, Hot water	AWM I-015H	AWM I-020H
Flow Rate (Unit:m ³ /hour)	Start Flow	0.012	0.014
	Minimum Flow Rate Q1:	0.031	0.05
	Transitional Flow Rate Q2:	0.05	0.08
	Permanent Flow Rate Q3:	2.5	4
	Overload Flow Rate Q4:	3.1	5
	Mechanical Measuring Error Q1~Q2:	±5%	
Mechanical Measuring Error Q2~Q4:	±2%		
Dimension (Unit: mm)	Length (L)	165	195
	Width(W)	85.5	85.5
	Height(H)	108	108
	Threads	G3/4B	G1B
Net Weight, (Unit: KG)		1.2	1.4
Max./Min. Reading		9999/0.0001	9999/0.0001
Grade:		Class B	
Ambient temperature,(Unit: °C)		0.1~50°C	
Working Pressure:		1.0MPa (Max. 1.6MPa in 15min)	
Relative Humidity:		<93%	
Working Environment:		B E1	
Working Life		6 years	
Waterproof Class		IP65	
Other Parameters:		Dry-dial/Multi-jet/VelocitY Type/Horizontal Mount	

Note: In this form, the flow rates comply with ISO 4064-2005. ISO 4064-1993 flow rates are optional.



Version 1.1

Technical Specifications subject to change without prior notice

Unit 4, Vale Enterprise Centre, Hayes Road, Sully, Vale of Glamorgan CF64 5SY Great Britain

Tel: 0044 1446 743377

Fax: 0044 5601 258134

Email: sales@kigg.com

website: www.kigg.com



181221